

# Value Creation for Society - Campus Hub Ecosystem -

Yuichi HARADA, Ph. D. 原田 裕一

Kyushu University

Kyushu University Open Innovation Platform Corp.

4 September 2025

**OIP** | OPEN INNOVATION  
PLATFORM



九州大学  
KYUSHU UNIVERSITY

# What are universities for?

Education and Research

Co-Creation with Society



**Engine** for the value creation of society

**Providing a platform,  
skilled coordinators/moderators,  
and active students**





## Social Reform Initiative

The way to solve social and industrial problems

KOINE



Kyudai global  
Open Innovation Network Engine

Common language and knowledge

Multi-stakeholders

Multi-disciplinary R&D

コイネ：恋ね、濃いね、来いね

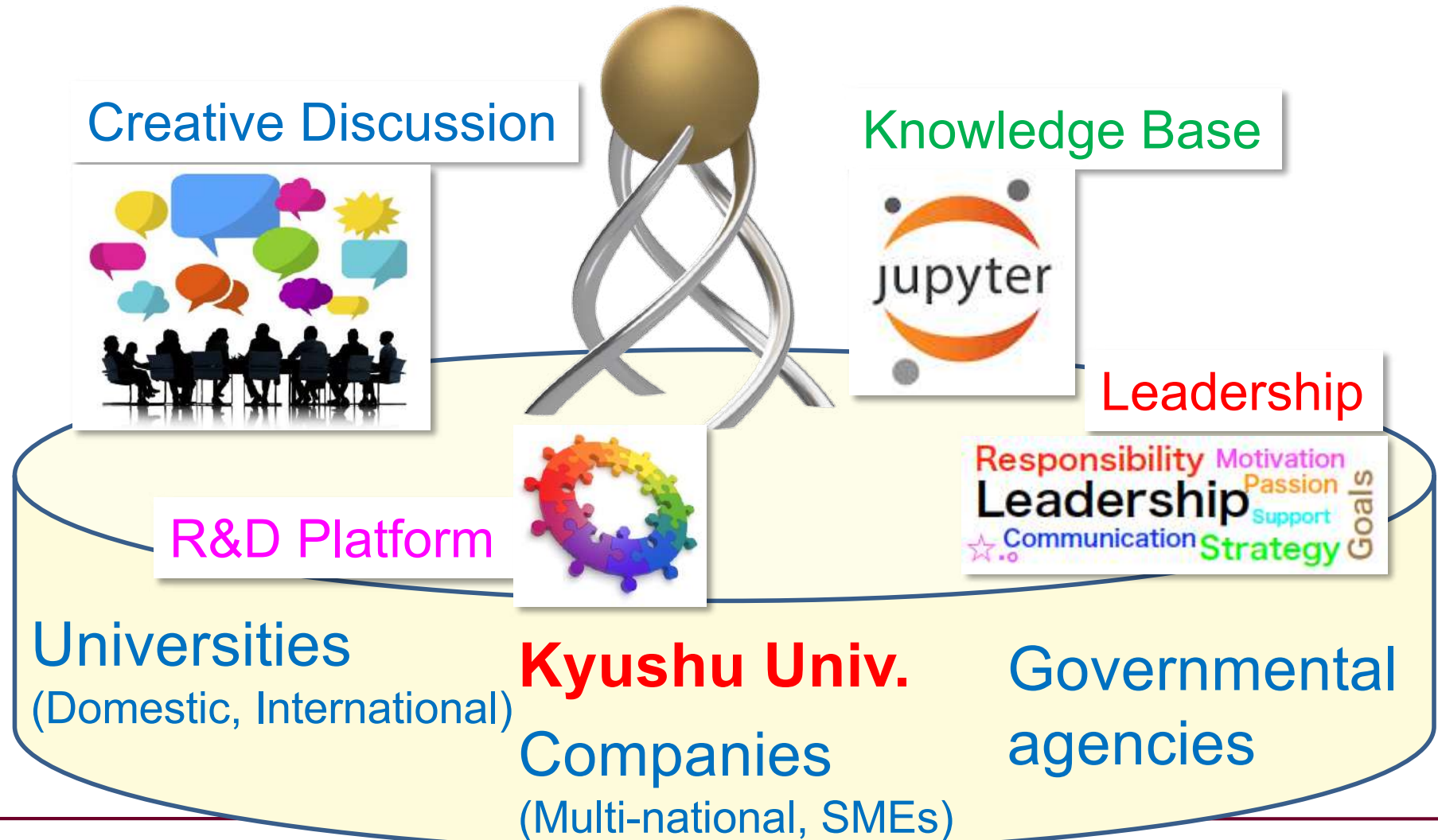
# Open Innovation + Entrepreneurship

Since 2017 October

# KOINE

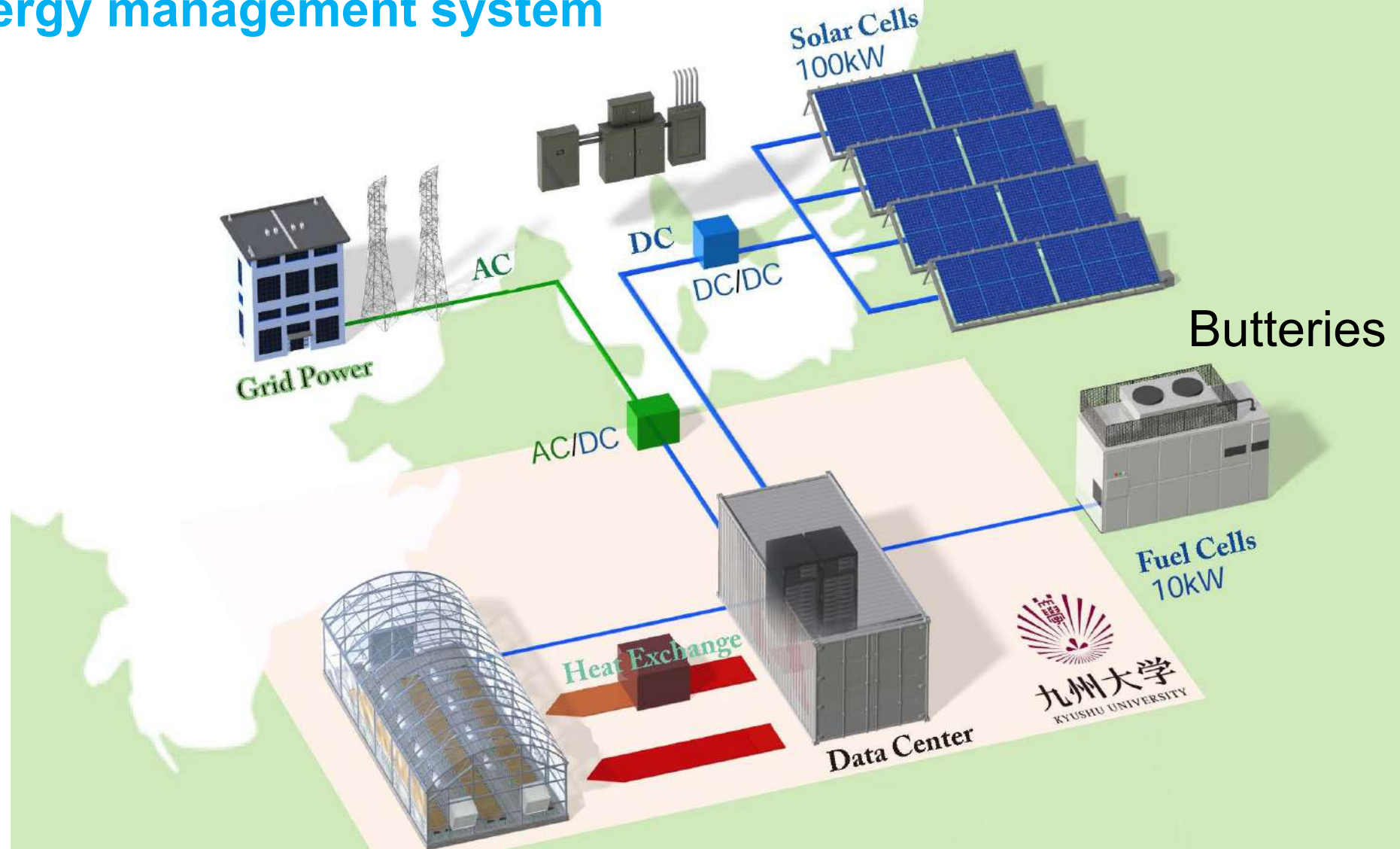


Created by Ryodai Mizuno  
<https://r-mizuno.myportfolio.com>



Renewable energy  
DC microgrid  
Energy management system

New generation of ICT system  
with fusion of hardware and  
software



Consumption reduction of the total thermal energy to  $\frac{1}{2}$ .



# IEEE-ICDCM 2019 DC Microgrid Conference



Tesla to Edison





# KOINE Working Groups

Science of 2.5 Dimensional Materials

Grand-in-Aid for Transformative Research Area

Single ion implantation  
£425k from UK

**NanoFactory**

3D printer in atomic  
& molecular level

**NanoFoundry**

Development &  
application of  
2D materials

**ColdTech**

Energy ecosystem  
Based on thermal  
energy

**AgriFood**

Agriproducts & its  
food application

**SmartCommunity**

Integrated system  
Based on energy &  
information

Centre for  
Sustainable cooling



**Q<sup>2</sup>ST**

Quantum computing

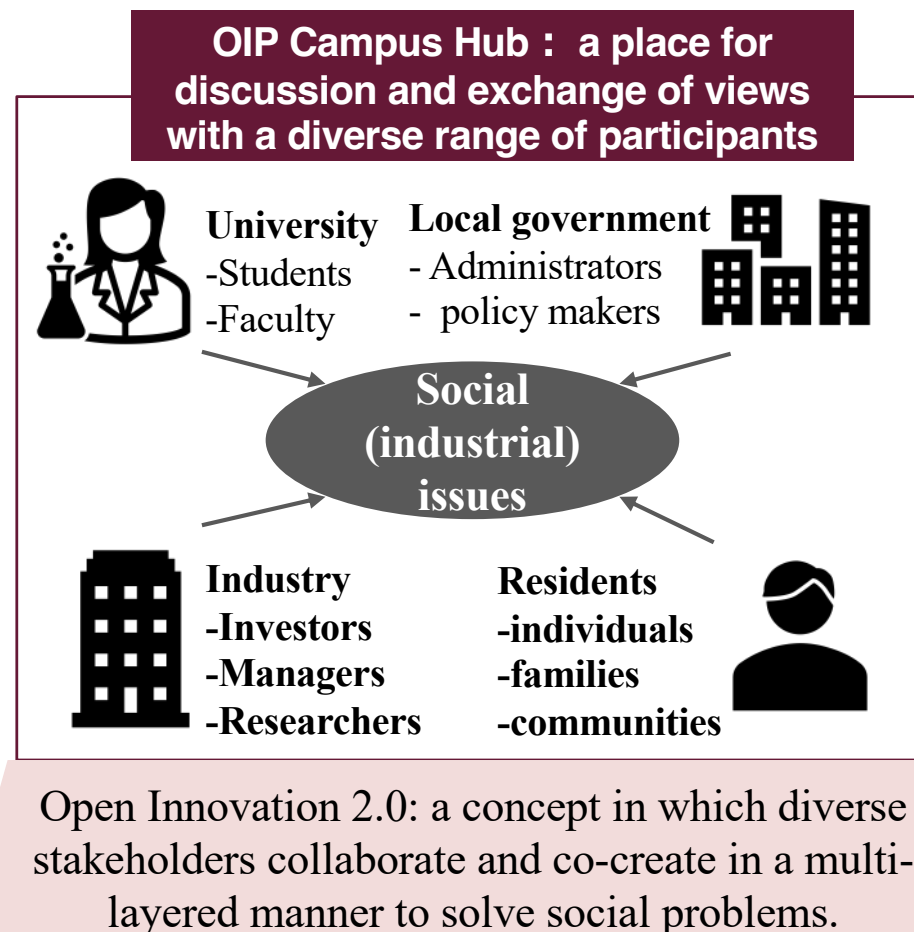
Quantum computing  
system center  
at KU

Halal  
Ecosystem



# OIP Campus Hub service

The OIP Campus Hub, provided by Kyushu University OIP corporation, is an initiative to create new values from discussion with diverse participants based on open innovation and entrepreneurship to realise a better society.



**Creating new research and industries based on a vision for solving social problems**

eExpected effects

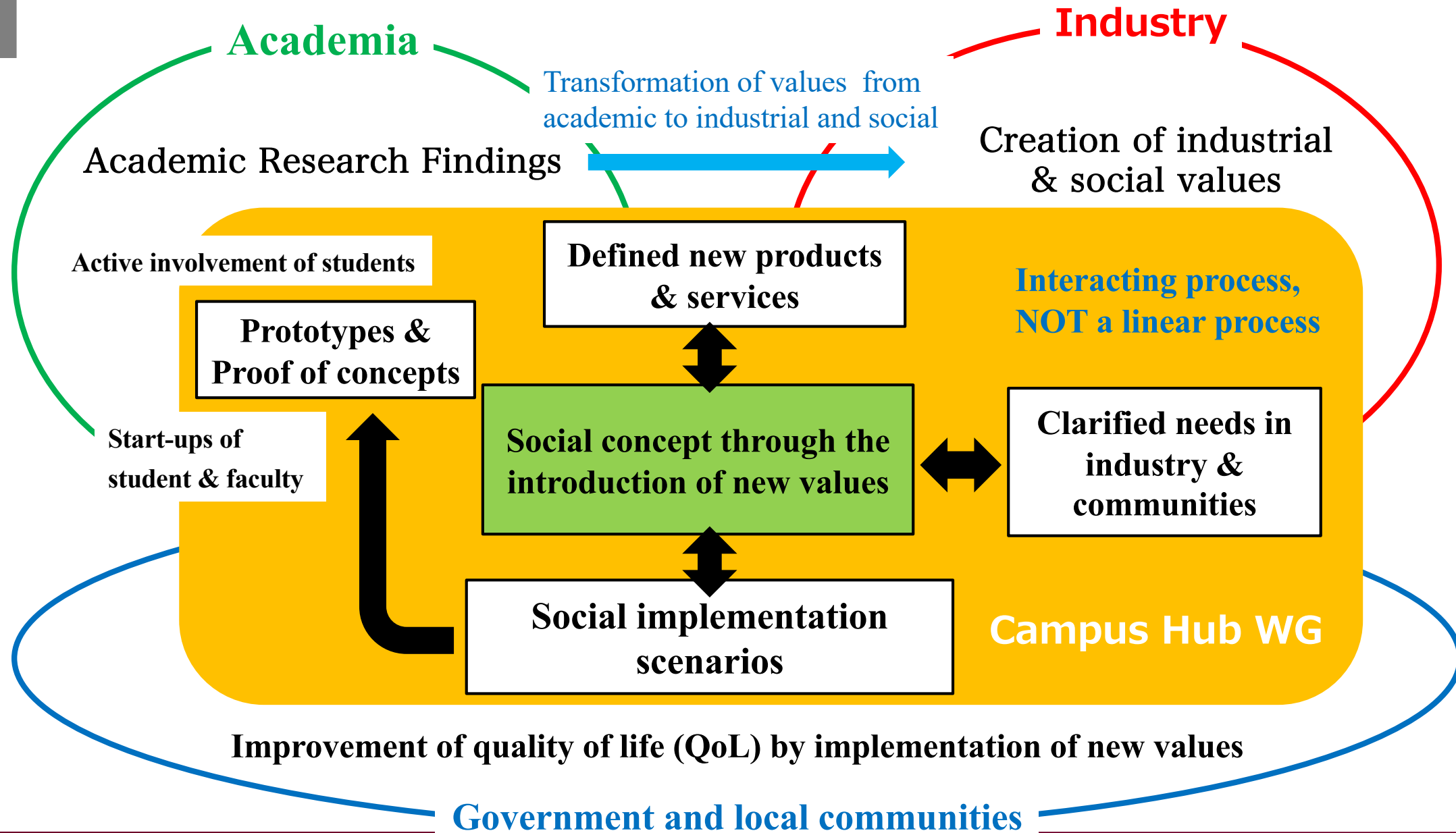
**Digital collective knowledge**  
Systematizing & visualizing knowledge on social issues

**Human resource development**  
Global leadership that works with multi-stakeholders

**Developing a vision for the future**  
Fostering a vision where social issues are solved.

**Proof of concept (PoC) studies**  
Proof-of-concept study of the idea, leading to competitive funding and the establishment of joint research.

# Value creation in OIP Campus Hub WG





# Ripple effects of OIP Campus Hub WG

**Industrial value chain**

**Local revitalization**

**Start-up**

**New business**

**Social infrastructure**

**Legal reform**

**Social concept through the introduction of new values**

**Social implementation scenarios**

**Prototypes & Proof of concepts**

**Defined new products & services**

**Clarified needs in industry &  
communities**

**Campus Hub WG**

**Collaborative research**

**Patent/Design**

**National grant**

**International grant**

## From a metropolitan to autonomous decentralized communities

**Objective:** To establish sustainable local communities based on local resources, the energy, information and food production within the region are examined.

**Vision:** Study of an infrastructure system based on the local circulations in communities with a population of 50,000-100,000 people.

### Region-specific businesses based on the infrastructure and its big data

Energy

River  
Management

Local Info  
(traffic, weather, etc.)

PHR

E-Commerce

Trans-  
portation

Agriculture

Recycling

Complex infrastructure, including regional energy, data center, smart agriculture, and etc.

Local Energy and  
Resources

Local Information

Local Food Production

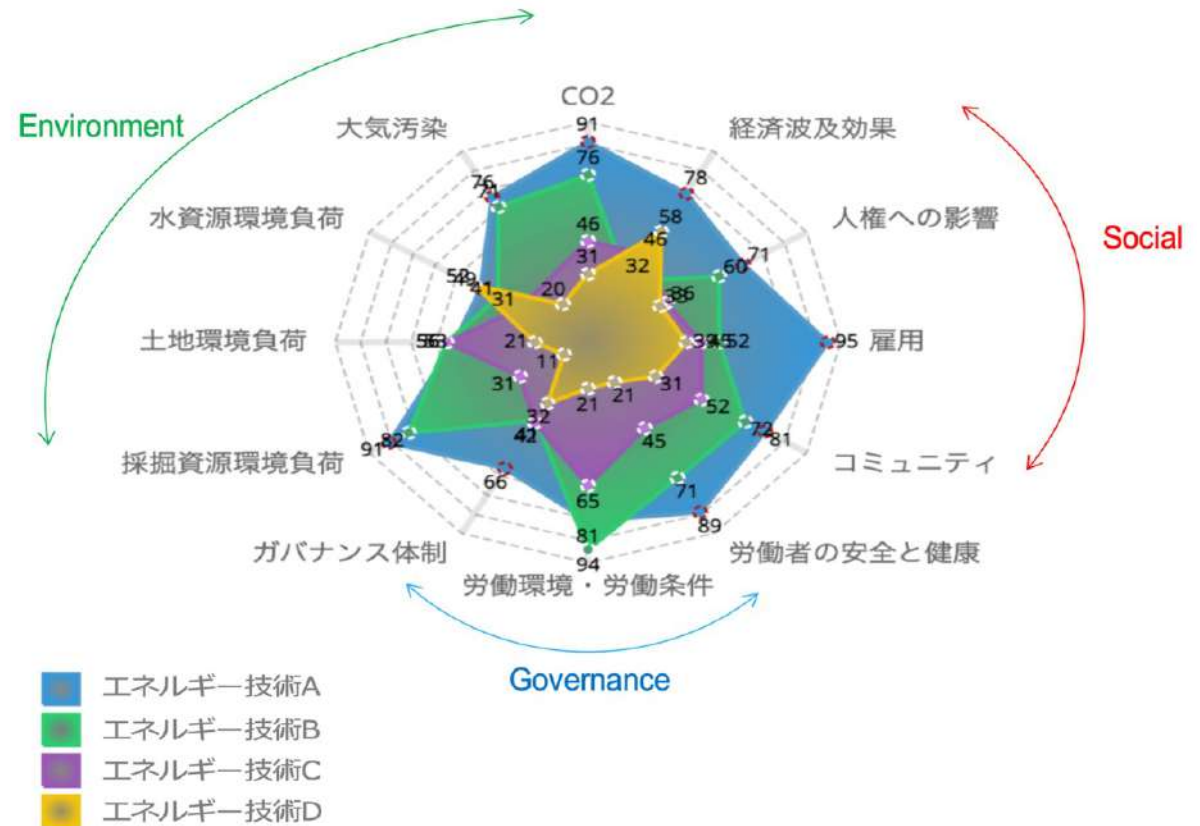


# Inclusive wealth (IW): Alternative to GDP



GDP: Gross Domestic Product

Prof. Alexander Keeley and Prof. Managi at KU



## Evaluation of Scope 3 GHG by IW

# MIRAI Collaboration Platform

