

MIRAI Kick-off 2024-2026

Post-event Report

Table of Contents

1. Event Overview
 - 1-1. Event Summary
 - 1-2. Program
 2. Statistics & Data
 - 2-1. Registrants
 - 2-2. Attendees List
 3. Post-event Feedback Survey Results
 - 3-1. Demographics
 - 3-2. Event Engagement
 - 3-2. Rating & Feedback
 4. Engagement Summary
 - 4-1. Keynote Lectures
 - 4-2. GCT Presentations
 - 4-3. Questions & Comments in General
 5. Way Forward
- Appendix.
- Exhaustive list of Questions & Comments
- Questions & Comments Posted on Q&A Box
 - Post-event Feedback Survey Question #8
 - Post-event Feedback Survey Question #9

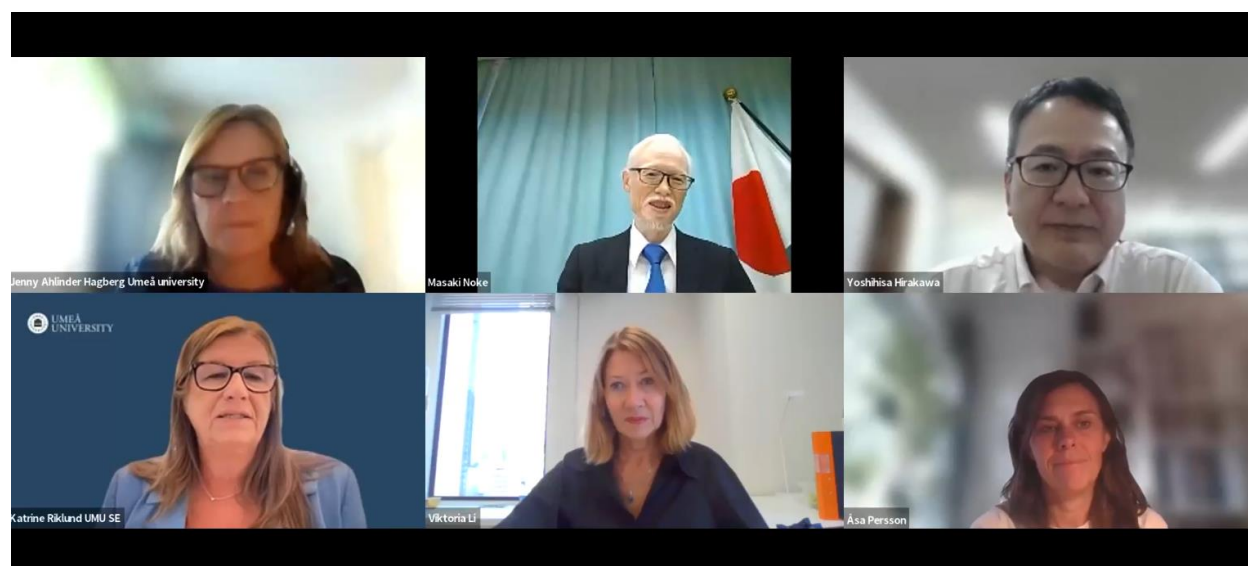
1. Event Overview

1-1. Event Summary

The MIRAI digital kick-off event, held on September 4th, marked the beginning of MIRAI's third phase (2024-2026). The event attracted over 200 participants from member universities in Japan and Sweden, as well as attendees from private companies and funding organizations.

The event began with congratulatory messages from ambassadors representing both countries, followed by keynote lectures. Dr. Åsa Persson from the Stockholm Environment Institute (SEI) presented on climate and sustainable development governance in relation to the implementation of the UN SDGs. Captain Taku Kawamura from ANA Holdings Inc. focused his talk on operational efforts in decarbonization.

Lastly, the Global Challenges Teams (GCTs), which are central to MIRAI's third phase, launched their collaborative work plans. These plans aim to promote long-term research collaborations, facilitate the mobility of early career researchers, and integrate innovation and entrepreneurship in education, fostering joint efforts between academia, industry, and external partners.



1-2. Program

Wednesday, September 4, 2024

09:00-11:00 CEST / 16:00-18:00 JST

Opening Remarks

Congratulatory Messages

- Embassy of Japan in Sweden: **Masaki Noke**, Japanese Ambassador Extraordinary and Plenipotentiary to Sweden
- Embassy of Sweden in Japan: **Viktoria Li**, Swedish Ambassador to Japan

Keynote Lectures

- *Science to Policy - Pathways for Accelerating Transformations*
Åsa Persson, Research Director and Deputy Director
Stockholm Environment Institute (SEI), Sweden
- *Decarbonizing operations implemented by ANA flight crews*
Taku Kawamura, Manager Corporate Sustainability / B777 Captain
ANA Holdings Inc., Japan

Short Presentation from Global Challenge Teams

- Health and an Ageing Population
Eleonor Kristoffersson (Örebro) & Yoshihisa Hirakawa (Nagoya)
- Climate Adaptation, Disaster and Risk Management and Prevention
Pierre De Wit (Gothenburg) & Takako Izumi (Tohoku)
- Resilient Cities and Communities
Irina Mancheva (Umeå) & Alexander Ryota Keeley (Kyushu)
- Materials
Feng Gao (Linköping) & Masahiro Yoshizawa-Fujita (Sophia)

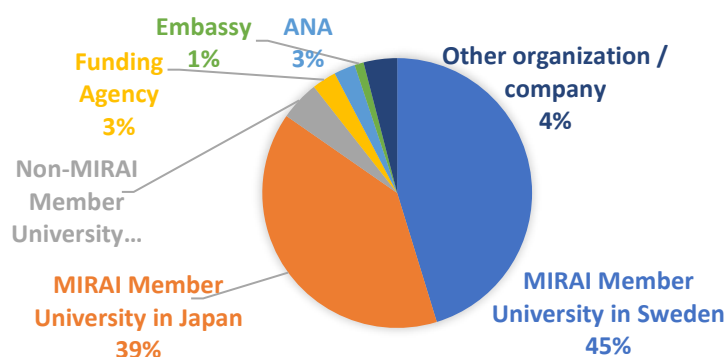
Closing Remarks

2. Statistics & Data

2-1. Registrants

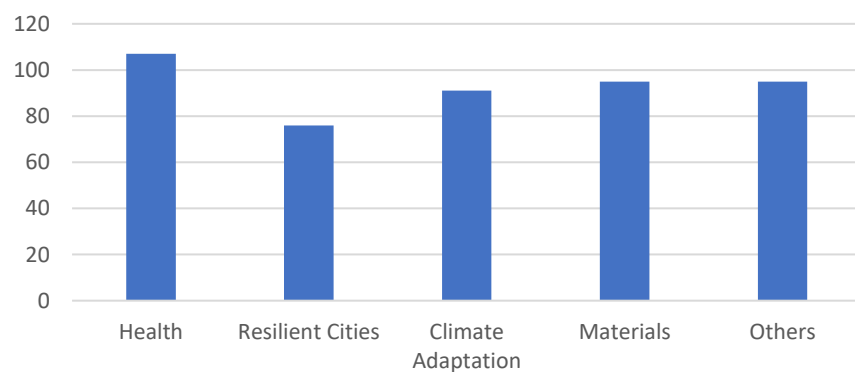
The number of those who signed up for Kick-off on Zoom Webinar form: **274**
(regardless of the presence during the actual Kick-off)

Affiliation



MIRAI Member University in Sweden	124
MIRAI Member University in Japan	108
Non-MIRAI Member University	13
Funding Agency	8
ANA	7
Embassy	3
Other organization / company	11
Total	274

Field of Interest/Major (Multiple Choices, cumulative)



Health and an ageing population	107
Climate adaption , disaster and risk management and prevention	76
Resilient cities and communities – policies, strategies, local government and urban planning	94
Materials for Energy Conversion and Storage: renewable energy, solar energy conversion, electrification, sustainable processes and use of resources	91
Others*	95

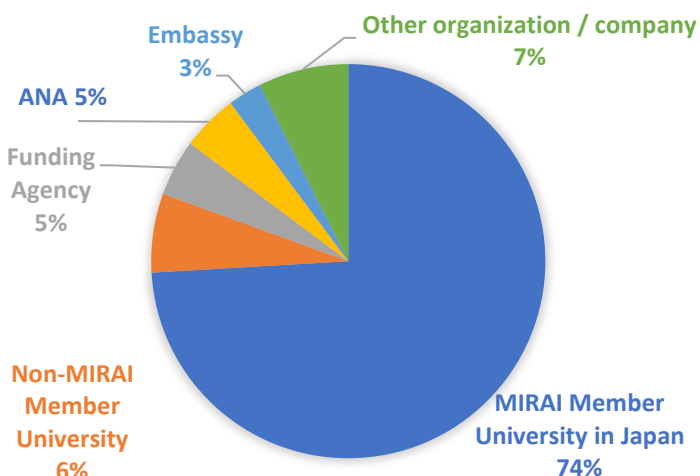
*At least one option must be chosen, those from administration choose “others”, in principle.

2-2. Actual Attendees to the Kick-off event

The actual number of participants in the Zoom webinar: **206**

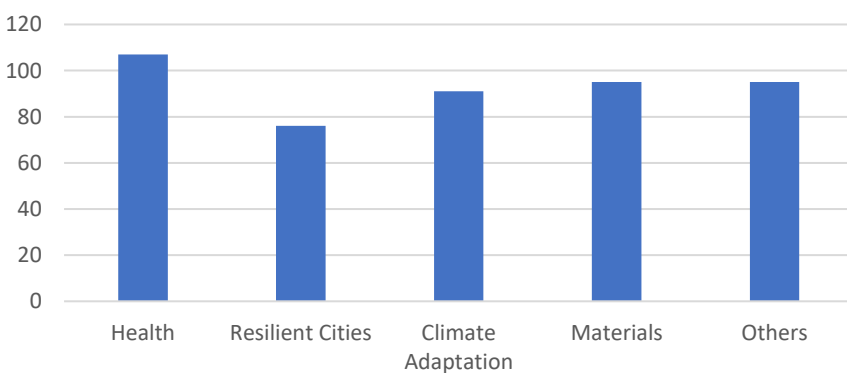
(total including those who joined or left during the program)

Affiliation



MIRAI Member University in Sweden	98
MIRAI Member University in Japan	80
Non-MIRAI Member University	7
Funding Agency	5
ANA	5
Embassy	3
Other organization / company	8
Total	206

Field of Interest/Major (Multiple Choices, cumulative)



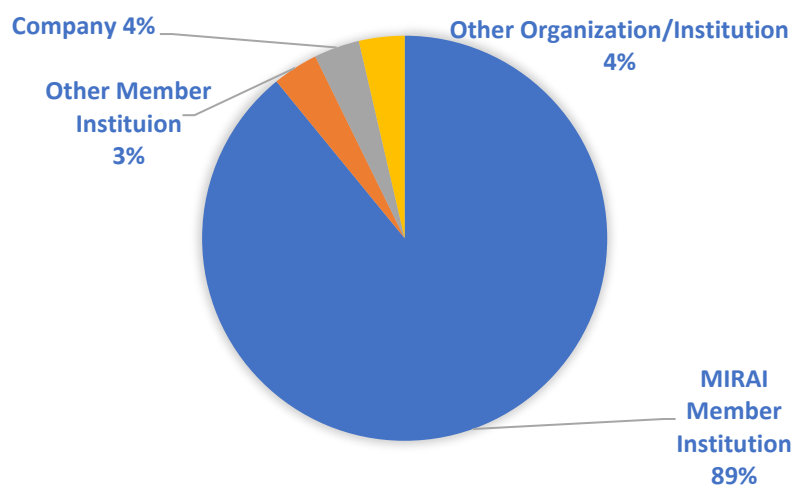
Health and an ageing population	82
Climate adaption , disaster and risk management and prevention	57
Resilient cities and communities – policies, strategies, local government and urban planning	66
Materials for Energy Conversion and Storage: renewable energy, solar energy conversion, electrification, sustainable processes and use of resources	68
Others*	72

3. Analysis - Post-event Survey

The number of respondents: **55**

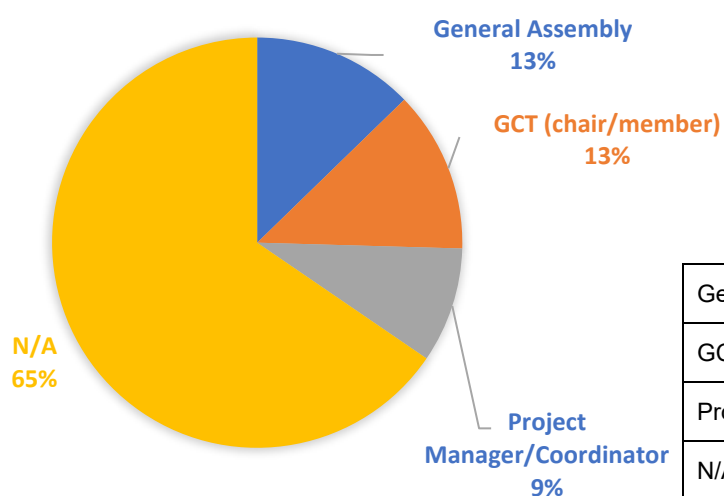
3-1. Demographics

Affiliation



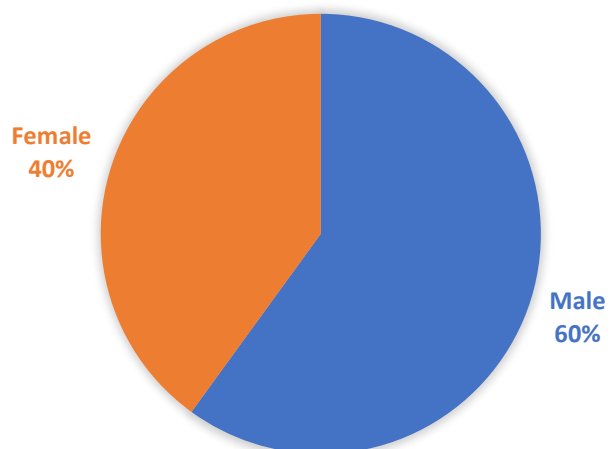
MIRAI Member University	49
Non-MIRAI Member University	2
Company	2
Other organization / institution	2
Total	55

Role in MIRAI consortium



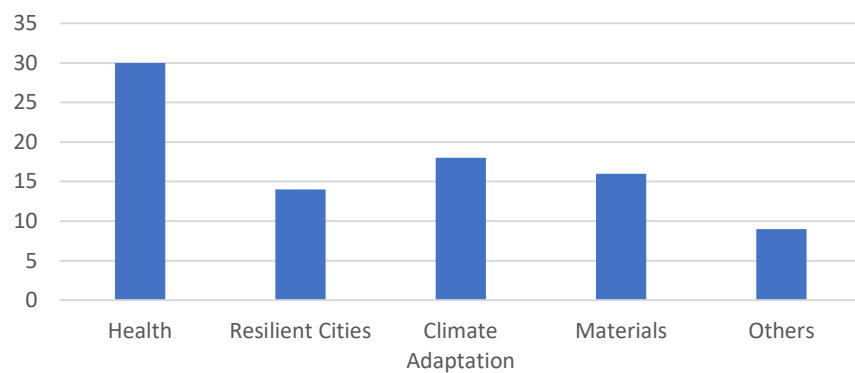
General Assembly	7
GCT (chair or member)	7
Project Manager/Coordinator	5
N/A (no role in MIRA)	36
Total	55

Gender



Male	33
Female	22
Total	55

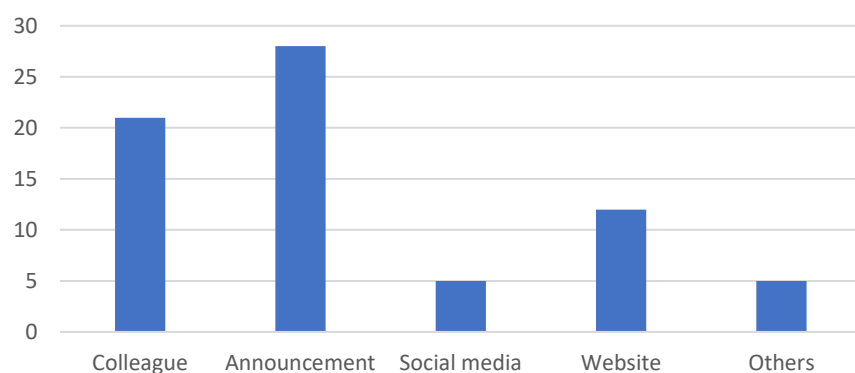
Field of Interest / Major (Multiple Choices)



Health and an ageing population	30
Climate adaption , disaster and risk management and prevention	14
Resilient cities and communities – policies, strategies, local government and urban planning	18
Materials for Energy Conversion and Storage: renewable energy, solar energy conversion, electrification, sustainable processes and use of resources	16
Others	9

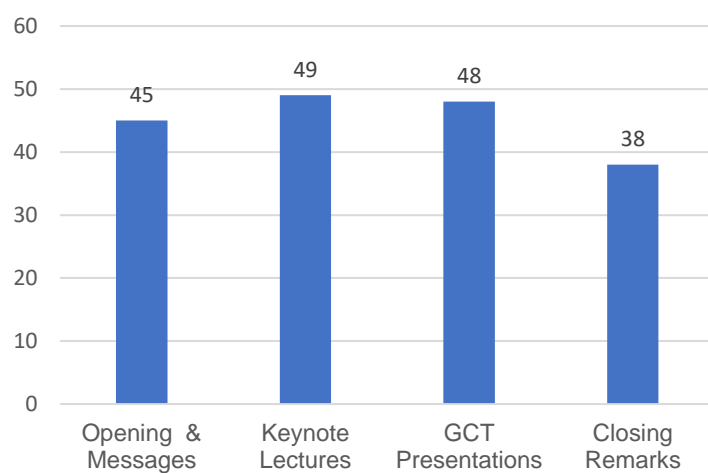
3-2. Event Engagement

How to get to know this event (Multiple Choices)



From colleague(s) in affiliated institution	21
Announcement in affiliated institution	28
Social media (LinkedIn)	5
MIRAI website	12
Others	5

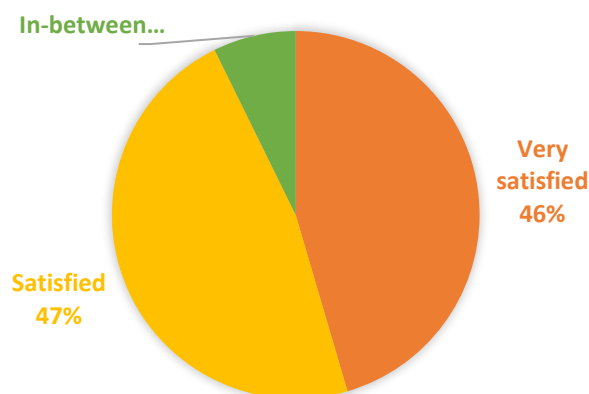
Program Attended (Multiple Choices)



Opening Remarks & Congratulatory Messages	45
Keynote Lectures	49
GCT presentations	48
Closing Remarks	38

3-3. Rating & Feedback

Overall satisfaction



Very satisfied	25
Satisfied	26
Neither satisfied nor dissatisfied	4
Somewhat dissatisfied	0
Dissatisfied	0
Total	55

Overall impressions / takeaway (Text-mining Analysis)

Refer to the appendix for the exhaustive list of responses



Ideas or suggestions for future events to be organized in MIRAI (Text-mining Analysis)

Refer to the appendix for the exhaustive list of responses



4. Engagement Summary

4-1. Keynote Lectures

Prof. Åsa Persson

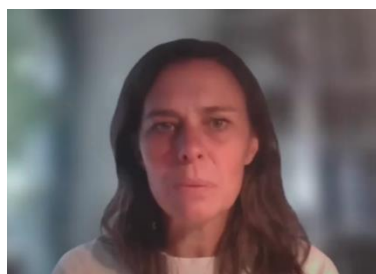
Science to Policy - Pathways for Accelerating Transformations

1. Questions and comment posted on the Q&A box during the event

- Great keynote speeches!
- Big applause to all! Great kick off meeting :)
- Thank you for a great Kick Off of MIRAI 2024-2026!

2. Comments from post-event survey respondents

- Today's presentation provided great hope for a new cooperative relationship aimed at resolving global issues.
- It was well prepared and fruitful.
- It was a good webinar, a lot of important information shared to consider.
- Today's presentation provided great hope for a new cooperative relationship aimed at resolving global issues.
- interesting keynote speeches!
- Keynote Lectures are very great



ANA Mr. Taku Kawamura

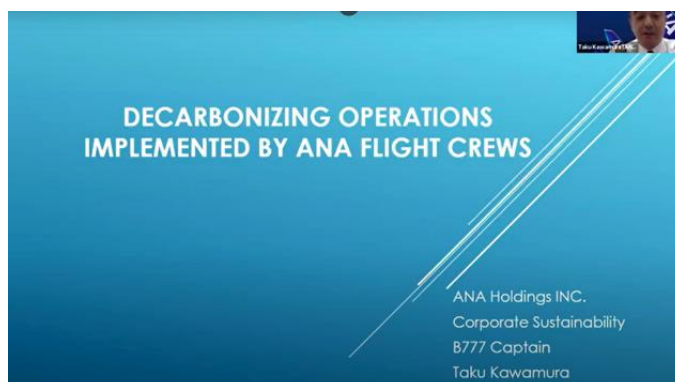
Decarbonizing operations implemented by ANA flight crews

1. Questions and comment posted on the Q&A box during the event

- Great keynote speeches!
- Thank you, Taku, for the detailed report on ANA's decarbonisation activities. I have a question. To what extent is ANA using SAF as an alternative to the usual air fuel?
 - Thank you for your question. Currently, we are provided very few amounts of SAF actually, however aiming to substitute 10% of total amount of fuel until 2030.
- Is MIRAI collaborating with ANA or any other airlines to measure the environmental impact?
 - I'm not sure if any of our partner universities have active research with ANA or other airlines, but I do not recall any MIRAI events that had participants from airlines or presented research in collaborations with airlines. This, of course, does not mean that isn't any collaborations, just that they have not previously used the MIRAI network.
- Thank you, Taku, for your information, indeed!
- Big applause to all! Great kick off meeting :)
- Thank you for a great Kick Off of MIRAI 2024-2026!

2. Comments from post-event survey respondents

- It was well prepared and fruitful.
- It was a good webinar, a lot of important information shared to consider.
- Today's presentation provided great hope for a new cooperative relationship aimed at resolving global issues.
- Keynote Lectures are very great
- It was nice to see real people talking about their topics (especially, Taku Kawamura - as he said, captain crew usually don't do such presentations). As a take-away - many things are interconnected, and different opinions are necessary to find a solution.



4-2. GCT Presentations

GCT in general

- How will the events that are open, which are available to researchers that are not a member in the GCT, be promoted? Can you become a member now in a GCT by contacting the chair of the GCT? (Anonymous)
 - GCTs are just organising bodies, activities they develop are generally open to all MIRAI partner university researchers. Information is primarily distributed through the MIRAI webpage (<https://www.mirai.nu/>) and calls sent out through the network of university program chairs. But I am sure all program chairs would be happy to receive information about your interest in the GCTs work! (Greg Neely)
- ...There is a huge gap in gender equality, immigrations, age discrimination etc between Japan and Sweden but how would you assess that when you collaborate or do some project at first? For example: for this event on 24 September, does this include new / external members that are not yet involved in the group or is it a closed event where the presentations are only by the current members?
 - Generally speaking, activities organized by Global Challenge Teams are open to researchers from all partner universities. Contact challenge team coordinators for information about specific projects and to signal your interest in participating.

Questions to specific team

- Dear team 2, do you have specific platform that we can follow your agenda/planned activities? (anonymous)
 - Thank you for the question. Some of the GCT2 members work with these types of questions. But the purpose of the GCTs is primarily to organize events open to all MIRAI member universities to promote new collaborations and create opportunities for young researchers, not to just do research with other GCT members. (Pierre De Wit)
- Hello team 2, do you have sub-research team that is connected to humanitarian logistics to combat with disasters? (Anonymous)
 - Thank you for the question. Some of the GCT2 members work with these types of questions. But the purpose of the GCTs is primarily to organize events open to all MIRAI member universities to promote new collaborations and create opportunities for young researchers, not to just do research with other GCT members. (Pierre De Wit)

Comments from Post-event Survey

- Good to get an overview of the project. Good to hear that GCT can expand their scope.
- Impressive organization, high quality researchers in many fields, ambition for trans-professional research, much needed target areas in research
- I can see the good collaboration between Sweden and Japan in an academic area.
- The very positive impression of MIRAI as well as of the possibilities to collaborate within the MIRAI consortium.
- I thought it was good to have cooperation from people from various fields.
- I missed out on the start but I had a good overall impression. I have not participated before and my main takeaway is a better understanding of the purpose of MIRAI; to promote new collaborations. I was unsure if the idea was to strengthen research between GCT groups, but now it seems more clear.
- It is my first time to know this platform. There are different research groups and various activities which I think offer good opportunities for the communication, personal growth, and career development of PhD students.
- Good to have a kick-off with presentation of each GCT. It is a kick-off for the 3 phase of MIRAI.

Ideas or Suggestions for future events to be organized in MIRAI

- Networking events for researchers from the participating universities for each GCT
- I think it would be great to have a borderless event where people don't feel the barriers of age, language, culture, or field.
- In-person meetings is very valuable for networking and for initiating collaborations. You can only do so much online.
- More of virtual workshops
- In-person idea exchange event
- Hub of ideas - like a bulletin board, when someone with an idea shares it as an open invitation for collaboration
- Research and Innovation week, IRL!, encouraging many researchers and stakeholders and other competencies to participate. make sure to advertise this very a lot of time to spare to ensure participation from both countries. this is the one big event we do. it is vital that researchers prioritize this, as well as are supported financially to participate in person!
- Seminar within the GCT, conference in Japan and if possible study visit, matchmaking so it is possible to meet and discuss project with partners in Japan, seed funding, PhD course
- Discussion about the immigration caused by climate change and social inequality

5. Way Forward

MIRAI 2024-2026 kick-off successfully completed with insightful presentations, vibrant discussions, and thoughtful comments from the participants. Going forward, MIRAI, in the third phase, will work even harder to strengthen long-term research collaboration and to promote Sweden and Japan in the following items but not limited to.

1. From Internal Collaboration to Interdisciplinary One beyond GCTs

Based on this kick-off, each GCT will set sail to their collaborative activities, facilitating joint efforts between academia, industry, and academia partners. As suggested by participants, having networking events and other types of opportunities is within its scope.

2. Expanding cooperation in activities and strengthening ties

Expanding the networking is a key component of MIRAI activities. Not only research collaboration, but also in various aspects including supporting researchers and educational activities, both countries will make sure to work on strengthening their ties.

3. Further Promotion of MIRAI and its activities

With this kick-off event stepping stone, MIRAI third phase will maximize its impact. With a view to it, MIRAI is going to further proceed with promotional and marketing activities to raise its visibility, not only within institution, but also in both countries or even globally!

APPENDIX

Exhaustive list of Questions & Comments

Questions & Comments Posted on Q&A Box

Questions/Comments	Answers/Responses
is it possible for a Swedish university to collaborate with Japanese companies such as Sony Cor.?	[Greg] Collaborations and engagement with stakeholders, including companies is highly encouraged; however, they should be within the framework of one of our Global Challenge Teams and in collaboration with at least one of the Japanese university partners.
I am an early researcher and I am from Linnaeus university but I am so interested with climate change and adaptation area. How we can develop and start to collaborate with researchers from Japan? What is the mechanism?	[Greg] The Global Challenge Teams will be organizing various activities and events to facilitate collaboration. Don't be afraid to contact the chairpersons of the Global Challenge Teams that interest you and express your interest in participating in the planned activities and come with suggestions for activities. Seed money for starting collaborations will be coming during this academic year as well as possibilities for the Swedish universities to fund long term exchanges. A good starting point is to start investigating the web pages of our Japanese partner universities to identify possible researchers/research groups that could be interesting to work with.
Is it possible for scholars based in Swedish universities that are not currently members of MIRAI 2024-2026 to join the programme?	[Greg]As financing of MIRAI activities is based largely on membership fees paid by the partner universities and grant applications made by these universities that required in-kind financing, most activities will be open primarily to scholars from member universities. However, some events may be open to the general public or to stakeholder groups. MIRAI has also occasionally participated in activities co-funded or organized by other parties which also have been open to a wider audience.
Can I understand that I need to have a Japanese University partner?	[Greg] Most MIRAI financed activities will require a bi-national collaboration between partner universities.
Good morning. Sorry there is a grey box on the side	[Kyushu admin] sorry for the inconvenience. it seems due to the slide data problem itself. we will revised version of the slides after the event.
There are rectangular boxes on the top and right hand side of the slides, was it me only?	[Kyushu admin] unfortunately for everyone. we will post the revised version of her slides after this event.
Hej, Jag heter Yuko Tohdoh! Jag hade bott i Uppsala 5 år. I am wondering if there is any possibility to collaborate with any immigrant-integration program in Sweden. I started my own project which integrate immigrants in Japan into the Japanese society. Integration is one of the SDGs and I came up with this idea partly though my life in Sweden, partly my research at Kyushu Univ. It would be great if I can receive any information about any groups or projects. Thank you!	[Umeå Admin] As of now we do not have any such collaboration. The GCT have just recently started working so we suggest you consult our website and our LinkedIn for updates of future collaborations and projects. We update it regularly!
Thank you Gregory for your insightful answers. Can you provide some links for us that starts looking for the information regarding MIRAI. So, we can research on these important links and find useful information, e.g., timeline of seed funding, collaboration, etc. Thanks!	[Umeå Admin] https://www.mirai.nu/ https://www.linkedin.com/company/76438211/admin/dashboard/
Here you can find researchers at Kyushu University in Japan. https://hyoka.ofc.kyushu-u.ac.jp/html/home_en.html	
If my collaborative Japanese University is not in the MIRAI yet, how can they become one of the partner universities?	[Greg] They would have to contact Kyushu University, which is the coordinating university in Japan.

When will the research from the third phase (2024-26) be published?	[Greg] After every phase of the MIRAI project a summary report is made, but during the phase we promote research results on our webpage, LinkedIn page and through (a soon to be produced!) newsletter. If you have published work that stems from your MIRAI collaboration, please send the information to one of the coordinating universities (Umeå/Kyushu) either directly or through your university's program manager and we will gladly promote it!
Thank you, Gregory, in relation to the previous question and Gregory's answer, am I correct in understanding that the first step is to find researchers/research groups at Swedish university/universities that are relevant to my research, and then to propose to the Global Challenge Teams that I would like to implement a joint research with these researchers/research groups?	[Greg] Each Global Challenge Team is happy to receive information about interested researchers and projects as this will help them plan activities. MIRAI is not a primary source of research funding, rather a platform for establishing contacts, organizing efforts, and facilitating collaboration. Through a generous grant from The Swedish Foundation for International Cooperation in Research and Higher Education we will be able to fund some activities, many of which will be greatly influenced by the Global Challenge Teams agenda, so it is great if they have a good picture of which research groups and projects are being established.
Will you cooperate somehow with the governments/agencies in Sweden/Japan in the MIRAI-project?	[Umeå Admin] That is the plan. Some of the activities that are being organized are intended to create collaborations with external partners both in Japan and in Sweden.
Thank you Juanita for the links. Will we have presentation during the kick-off meeting today regarding the application process, timeline, funding details, support and resources, etc?	[Umeå] During the kickoff we will mostly introduce the Global Challenges Teams and give a brief intro of what MIRAI is about. For additional information and support please refer to our website or get in contact with the coordinating universities.
Dear Åsa, can we get access to this report? It is very useful!	[Umeå Admin] We will share the presentation after the kickoff for everyone to consult.
what happens to existing partnerships that were developed through MIRAI? What kind of further support can we get from MIRAI?	[Umeå Admin] Some projects continue working together, some morph into other projects. MIRAI aims to support them to find additional funding, for example, help them showcase their research and streamline communication between partners.
Leo, if you want to discuss this at ORU, you can contact me and we can set up a meeting.	
thanks Juanita. Ok...so how do I gain access to this support from MIRAI in terms of finding funding and other supports?	[Umeå Admin] All this support is done through the Global Challenges Teams. Please check our website for more detailed information and if you have additional questions you can contact the organizing universities or project managers directly. You can find the contacts on the website https://www.mirai.nu/
Is there some issue with the audio?	[Kyushu] kind of the internet situation at Mr. Kawamura, we assume. we will share this video URL on MIRAI website after the event
Is MIRAI collaborating with ANA or any other airlines to measure the environmental impact?	[Greg] I'm not sure if any of our partner universities have active research with ANA or other airlines, but I do not recall any MIRAI events that had participants from airlines or presented research in collaboration with airlines. This, of course, does not mean that isn't any collaborations, just that they have not previously used the MIRAI network.
Great keynote speeches!	[Taku Kawamura] Thank you Olof, my pleasure !
Thank you, Taku, for the detailed report on ANA's decarbonization activities. I have a question. To what extent is ANA using SAF as an alternative to the usual air fuel?	[Taku Kawamura] Thank you for your question. Currently, we are provided very few amount of SAF actually, however aiming to substitute 10% of total amount of fuel until 2030.
thanks Hirakawa san. that was very interesting. How can I connect with you?	[Yoshihisa Hirakawa] <his email address> You can contact me anytime.

Hello team 2, do you have sub-research team that is connected to humanitarian logistics to combat with disasters?	[Pierre De Wit] Thank you for the question. Some of the GCT2 members work with these types of questions. But the purpose of the GCTs is primarily to organize events open to all MIRAI member universities to promote new collaborations and create opportunities for young researchers, not to just do research with other GCT members.
This could be concatenated to the previous question but there is a huge gap in gender equality, immigrations, age discrimination etc between Japan and Sweden but how would you assess that when you collaborate or do some project at first?	
For example: for this event on 24 September, does this include new / external members that are not yet involved in the group or is it a closed event where the presentations are only by the current members?	[Greg] Generally speaking, activities organized by Global Challenge Teams are open to researchers from all partner universities. Contact challenge team coordinators for information about specific projects and to signal your interest in participating.
Thank you, Taku, for your information, indeed!	[Taku Kawamura] You are very welcome !
Dear team 2, do you have specific platform that we can follow your agenda/planned activities?	[Pierre De Wit] Thank you for the question! As we start to plan activities for all MIRAI member universities, we will make sure that they are announced on the MIRAI website: https://www.mirai.nu/ , as well as advertised internally within all member universities. You can of course also contact any of the GCT members for more information.
How will the events that are open, which are available to researchers that are not a member in the GCT, be promoted? Can you become a member now in a GCT by contacting the chair of the GCT?	[Greg] GCTs are just organizing bodies, activities they develop are generally open to all MIRAI partner university researchers. Information is primarily distributed through the MIRAI webpage (https://www.mirai.nu/) and calls sent out through the network of university program chairs. But I am sure all program chairs would be happy to receive information about your interest in the GCTs work!
Will the seed funding be open calls where researchers (from universities in Mirai) can apply or will the calls be limited to the selected members in the GCT?	[Greg] Calls will be open.
Hello Pierre, Juanita, and Gregory, thank you all for the answers! It is so excited to see opportunities and many people working from different disciplines towards same goals.	
Will the upcoming seed funding calls be published only on the Mirai webpage?	[Greg] Seed funding calls, as well as other MIRAI calls, will always also be sent directly to program managers at each partner university for further distribution within their university's communication channels. Further, we are currently developing a newsletter to send out on a regular basis to keep MIRAI interested researchers and stakeholders updated about ongoing activities and results.
Thanks for the webinar. I am a PhD student at Kyushu University researching in the energy field and interested in the goals/ activities done by MIRAI. Are there any groups or teams that I can join and how? Thank you.	[Kyushu Admin] pls contact to Project Manager at Kyushu U. mirai-jp@jimu.kyushu-u.ac.jp
regarding academia-industry collaborations, how do you approach companies? or could you say something on initiative related to startups? Thank you!	
Big applause to all! Great kick off meeting :)	
Thank you for a great Kick Off of MIRAI 2024-2026 !	

Survey Question #8

Could you share with us your overall impressions of the kick-off? What is one takeaway from the kick-off?

- It was well prepared and fruitful.
- Great to see that Mirai is alive and kicking and moving into the next phase
- Good to get an overview of the project. Good to hear that GCT can expand their scope
- It was a good webinar, a lot of important information shared to consider.
- Well organised and good overview of activities.
- Impressive organization, high quality researchers in many fields, ambition for trans-professional research, much needed target areas in research
- URLs of MIRAI and GCTs should be presented in the last side of closing remarks
- It was good to get an overview of the MIRAI activities! Some of my interest and some that are not of my interest.
- I am researcher at Tohoku University and participated in the kick-off to seek for seeding funds for ongoing collaboration with Swedish researcher in Linköping University. I am a bit unsure about the information on coming open calls.
- The very positive impression of MIRAI as well as of the possibilities to collaborate within the MIRAI consortium.
- I can see the good collaboration between Sweden and Japan in an academic area.
- The meeting was comprehensive and well organized.
- Today's presentation provided great hope for a new cooperative relationship aimed at resolving global issues.
- I thought it was good to have cooperation from people from various fields.
- We may share similar research interests that we could collaborate on.
- I missed out on the start but I had a good overall impression. I have not participated before and my main takeaway is a better understanding of the purpose of MIRAI; to promote new collaborations. I was unsure if the idea was to strengthen research between GCT groups, but now it seems more clear.
- It was nice to see real people talking about their topics (especially, Taku Kawamura - as he said, captain crew usually don't do such presentations). As a take-away - many things are interconnected and different opinions are necessary to find a solution
- It was really good
- Interesting topics and nice presentations. But a bit surprised AI is not a focus area anymore.
- Positive, well organised
- Excited that the third phase has been funded and now started.
- I did not get information as to how can someone join this consortium. I am from a Swedish University called Karlstad's University
- Very inspiring
- I was interested with the program
- Keynote Lectures are very great

- People seem to be keen to interact together
- interesting keynote speeches! overall impression, a little "beginner": make sure to ensure all speakers have a professional background. the Swedish ambassador sat in her office with not so much as a flag to indicate what she represented. make sure to ensure to download all movies to be shown in presentations before the event, so that you don't have to suffer buffering issues (like what happened to the Keynote from ANA)
- It is my first time to know this platform. There are different research groups and various activities which I think offer good opportunities for the communication, personal growth, and career development of PhD students.
- Good to have a kick-off with presentation of each GCT. It is a kick-off for the 3 phase of MIRAI.
- Professional and friendly
- Could see and expect the strong connection between Swedish universities and Kyushu university.

Survey Question #9

Do you have any ideas or suggestions for future events that you would like MIRAI to organize?

- Networking events for researchers from the participating universities for each GCT
- No. Thank you very much for preparing this event.
- More involvement of University students, not only researchers
- cultural exchange either in Sweden or Japan for the exchange scholars or students
- No
- The respective groups could be responsible for a session.
- Junior researchers events, "speed-dating" for PhD students
- Based on the comments, researchers are ready to go. The questions are very practical, how can I get involved, what funding will be available etc. Maybe set a Q&A on the website for all these questions since all project managers will get them as well but hard to guide forward since the GCT's works rather independently.
- Perhaps a preliminary schedule so that if I only wanted to listen to a specific GCT I would be able to
- In-person meetings is very valuable for networking and for initiating collaborations. You can only do so much online.
- I would like you to continue holding this event in real event at Sweden and Japan, also online.
- More of virtual workshops
- I think it would be great to have a borderless event where people don't feel the barriers of age, language, culture, or field.
- In-person idea exchange event
- Hub of ideas - like a bulletin board, when someone with an idea shares it as an open invitation for collaboration. Usually, it takes some time to find the suitable person/team, but maybe this way it'd be faster and the idea won't forgotten or lost due to complicated process. And also, PhD students, for example, depend on their professors' connections and by graduation they may have nothing but several projects within the same university. At the same time, their experience before PhD may be relevant for someone else's idea. Or they may look for post-doc projects-positions there
- exchange opportunities
- If it continues as the last phase, it will be another success.
- Tell how one can join
- More ongoing information, events and activities for collaboration throughout the year. More support of young innovators/early career researchers
- go ahead and incorporate short term trainings and education fund opportunities for other countries in addition to Japan and Sweden
- no
- not applicable
- Research and Innovation week, IRL!, encouraging many researchers and stakeholders and other competencies to participate. make sure to advertise this very a lot of time to

spare to ensure participation from both countries. this is the one big event we do. it is vital that researchers prioritize this, as well as are supported financially to participate in person!

- Six months to one year for doctoral collaborative research projects or visiting activities in Sweden.
- Seminar within the GCT, conference in Japan and if possible study visit, matchmaking so it is possible to meet and discuss project with partners in Japan, seed funding, PhD course
- I have a good experience of MIRAI so far
- Discussion about the immigration caused by climate change and social inequality